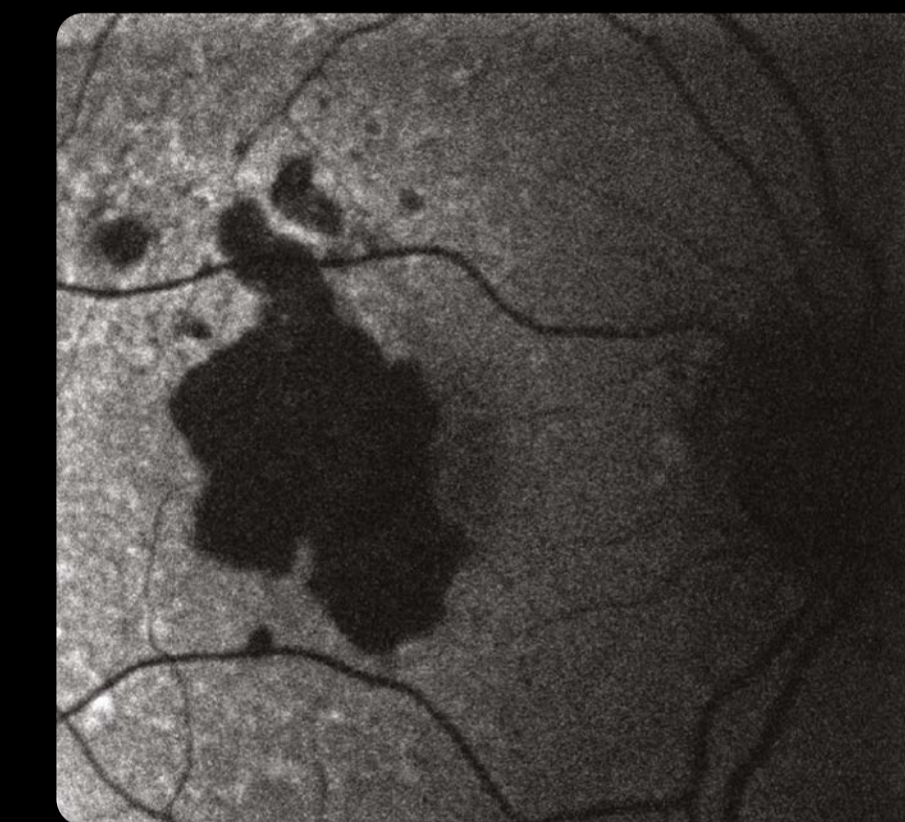
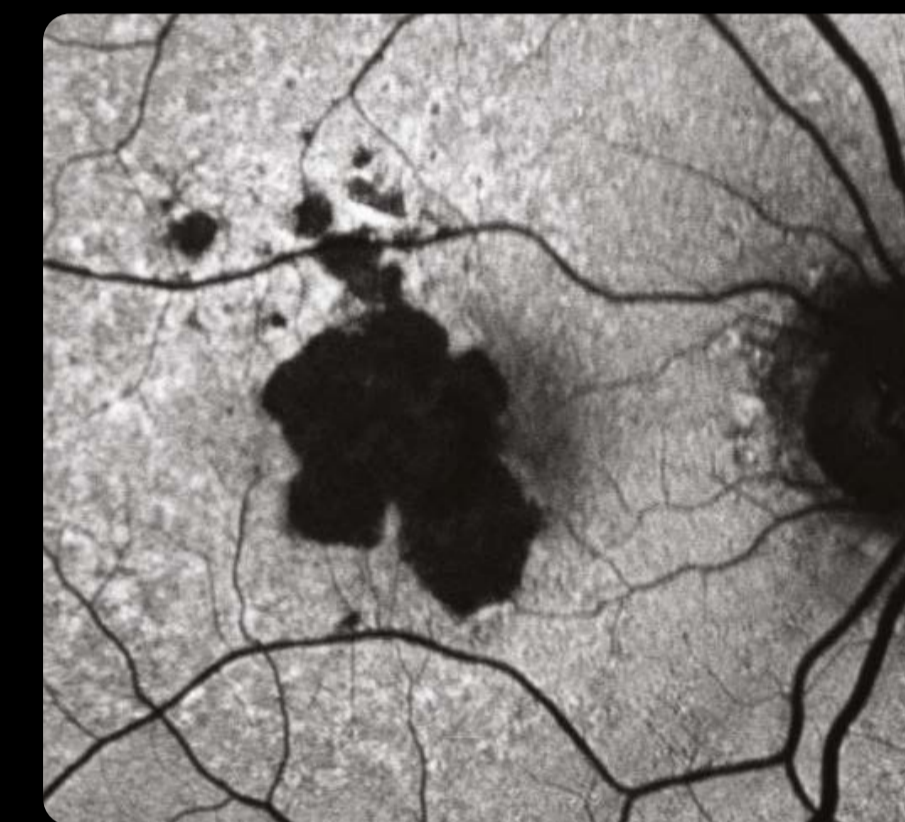
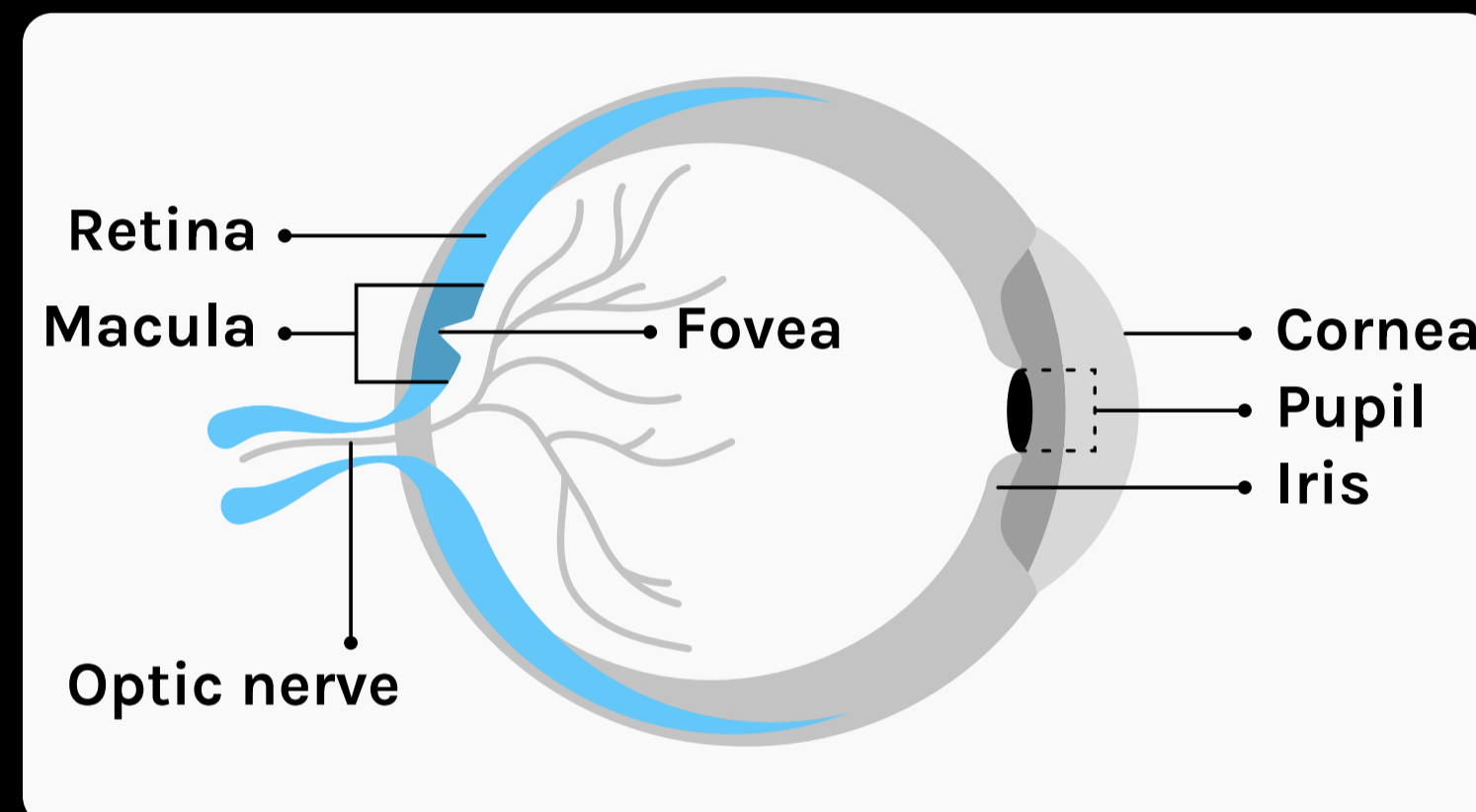


Progression of geographic atrophy

Geographic atrophy is an advanced form of dry age-related macular degeneration (AMD) that leads to irreversible vision loss.

Geographic atrophy can progress from mild to significant vision loss in as little as 2.5 years*, as it spreads to the centre of the eye. Therefore, sharing any changes in your vision as early as possible is an important first step in seeking to minimise disease impact.

What may happen to your retina



What you may see



Representation of vision loss for illustrative purposes only.

Talk to your doctor about how you can monitor your vision and get ahead of geographic atrophy.



*Average time since diagnosis of geographic atrophy based on analysis of 181 patients with geographic atrophy. Geographic atrophy progression is different for everyone. Some people may experience slower or faster geographic atrophy progression and changes in vision.